



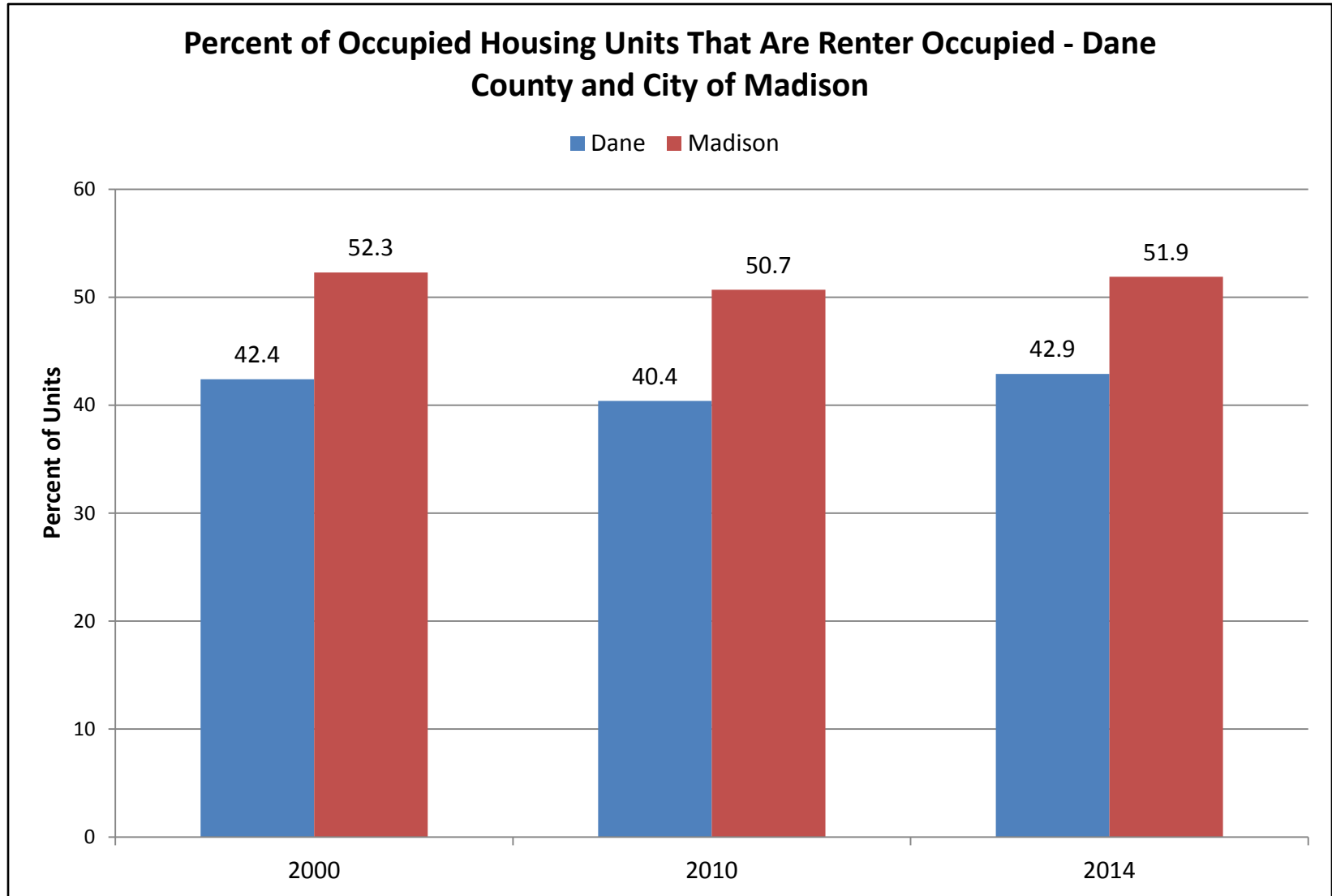
# 2016-2020 Strategic Plan

---

# Housing



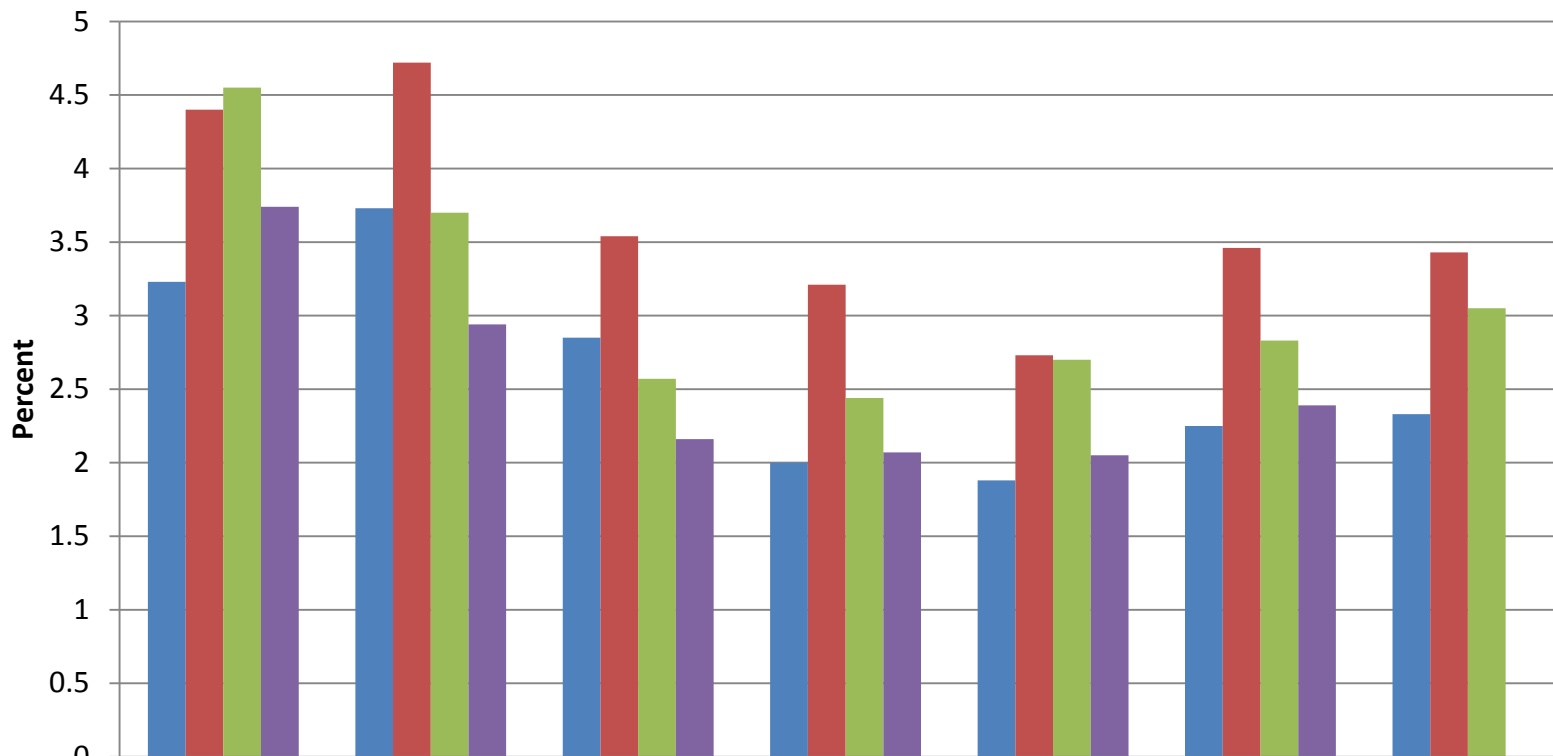
# 2016-2020 Strategic Plan





# 2016-2020 Strategic Plan

## MGE Madison Area Rental Vacancy Rates by Year and Quarter

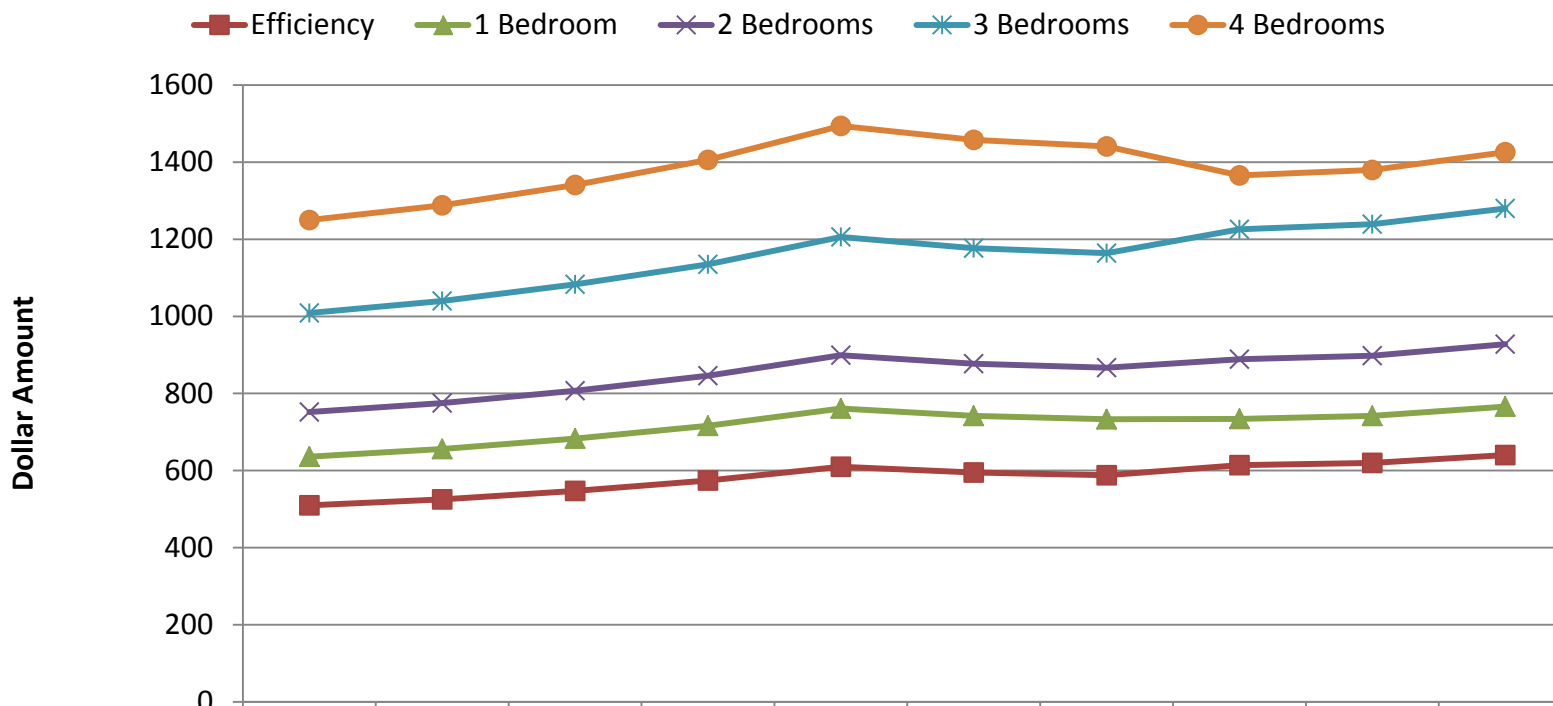


	2009	2010	2011	2012	2013	2014	2015
QT1	3.23	3.73	2.85	2.00	1.88	2.25	2.33
QT2	4.40	4.72	3.54	3.21	2.73	3.46	3.43
QT3	4.55	3.70	2.57	2.44	2.70	2.83	3.05
QT4	3.74	2.94	2.16	2.07	2.05	2.39	



# 2016-2020 Strategic Plan

## Fair Market Rents by Federal Fiscal Year for Dane County

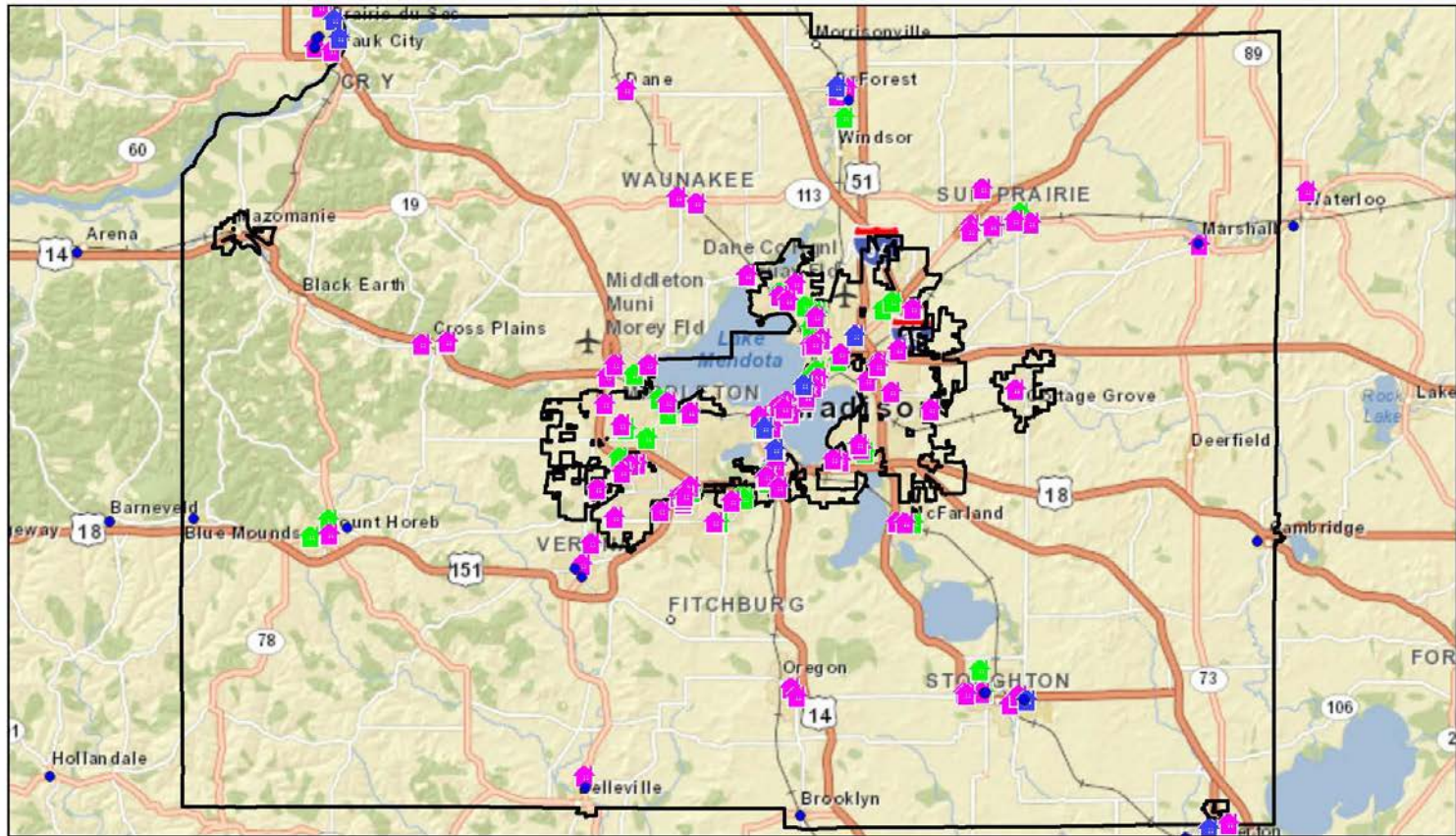


	2006	2007	2008	2009	2010	2011	2012	2013	2014	2015
Efficiency	510	525	547	574	610	595	588	614	620	640
1 Bedroom	636	656	683	716	761	742	733	734	742	766
2 Bedrooms	752	775	807	846	899	877	867	889	898	928
3 Bedrooms	1009	1040	1083	1135	1206	1177	1164	1226	1239	1280
4 Bedrooms	1250	1288	1341	1406	1494	1458	1441	1366	1380	1426



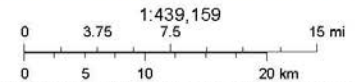
# 2016-2020 Strategic Plan

## HUD, USDA, and LIHTC Assisted Properties - HUD Community Planning and Development Maps



October 14, 2015

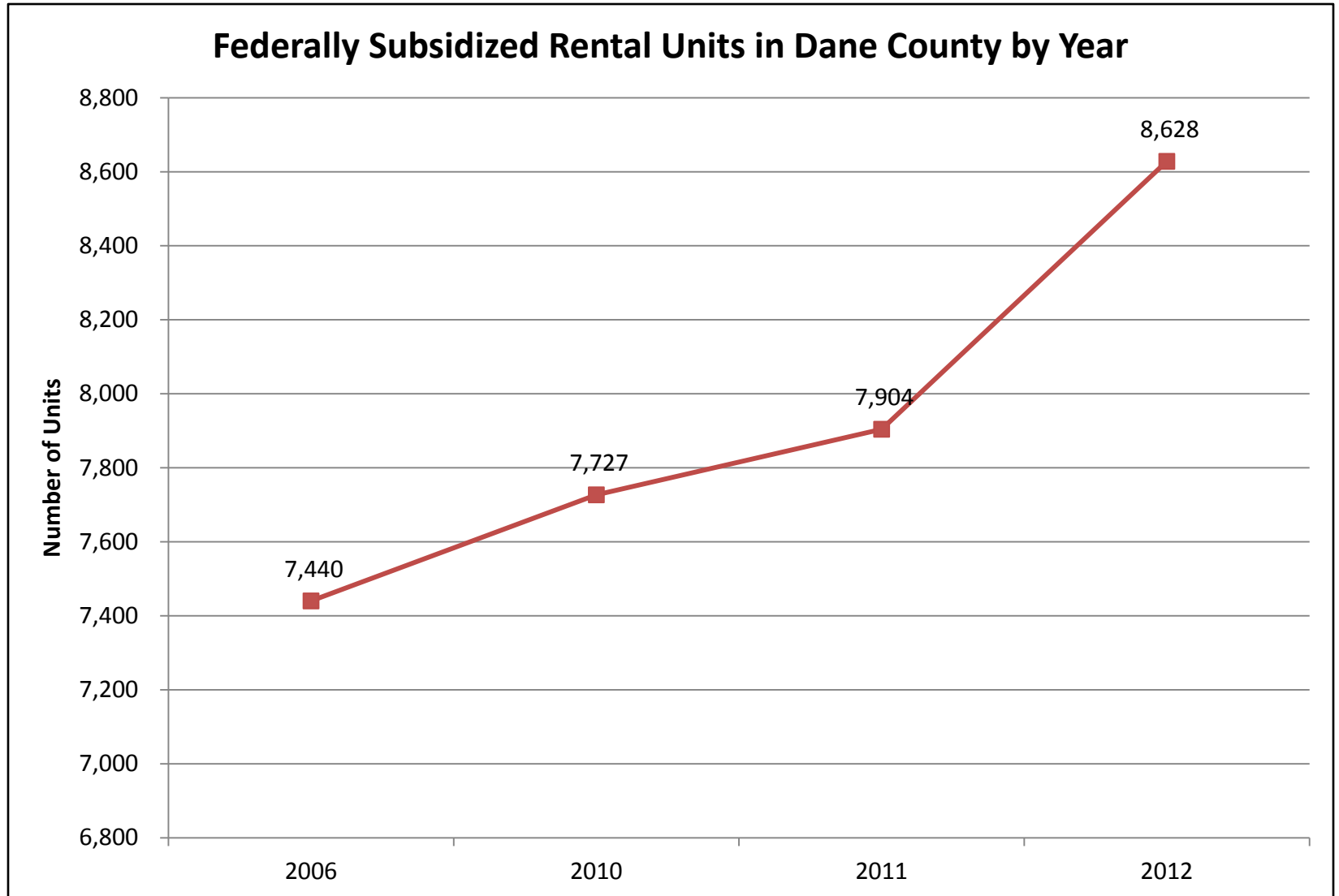
-  USDA Rural Housing
-  Multifamily Properties - Assisted
-  Public Housing Development
-  LIHTC Property



Sources: Esri, HERE, DeLorme, USGS, Intermap, increment P Corp., NRCAN, Esri Japan, METI, Esri China (Hong Kong), Esri (Thailand), MapmyIndia, © OpenStreetMap contributors, and the GIS User Community



# 2016-2020 Strategic Plan





# 2016-2020 Strategic Plan

---

## Dane County Section 8 Housing Choice Voucher Program:

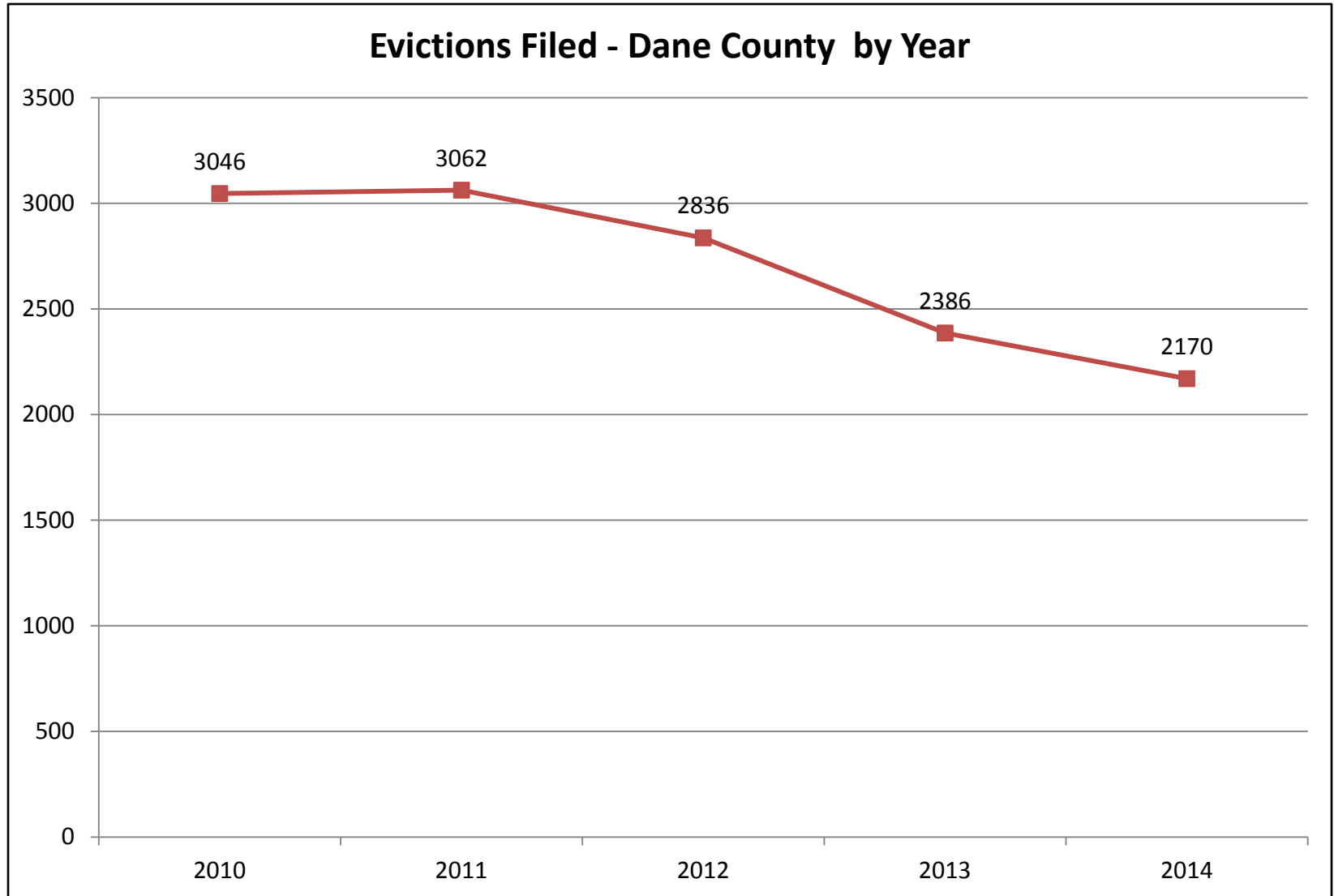
- Opened waiting list for 4.5 hours on August 4, 2015.
- Said they would accept 1,500 pre-applications, the number they expected to serve in 1-2 years.
- Received 2,212 pre-applications.
- Waiting list was last open in 2007.

## Demographics of Pre-Applicants:

- 2,212 applications covering 4,865 total family members.
- 1,736 (78.5%) of applications have female Heads-of-Households.
- 314 (14%) of applications have Head-of-Household age 55+.
- 727 (32.8%) report being homeless.
- 1,178 (53.2%) report paying more than 40% of their income in rent and utilities.
- 332 (15%) report living in substandard housing.



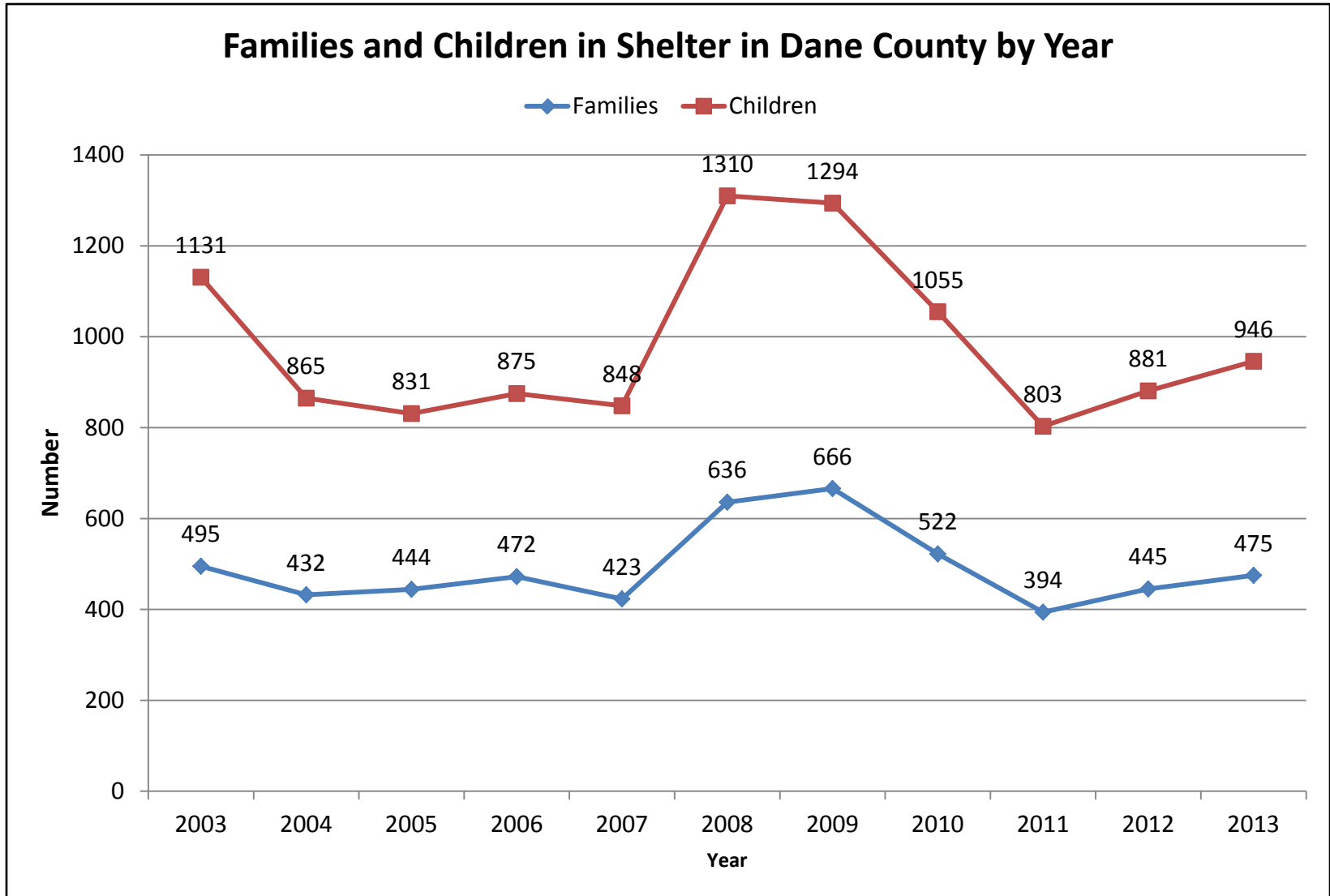
# 2016-2020 Strategic Plan





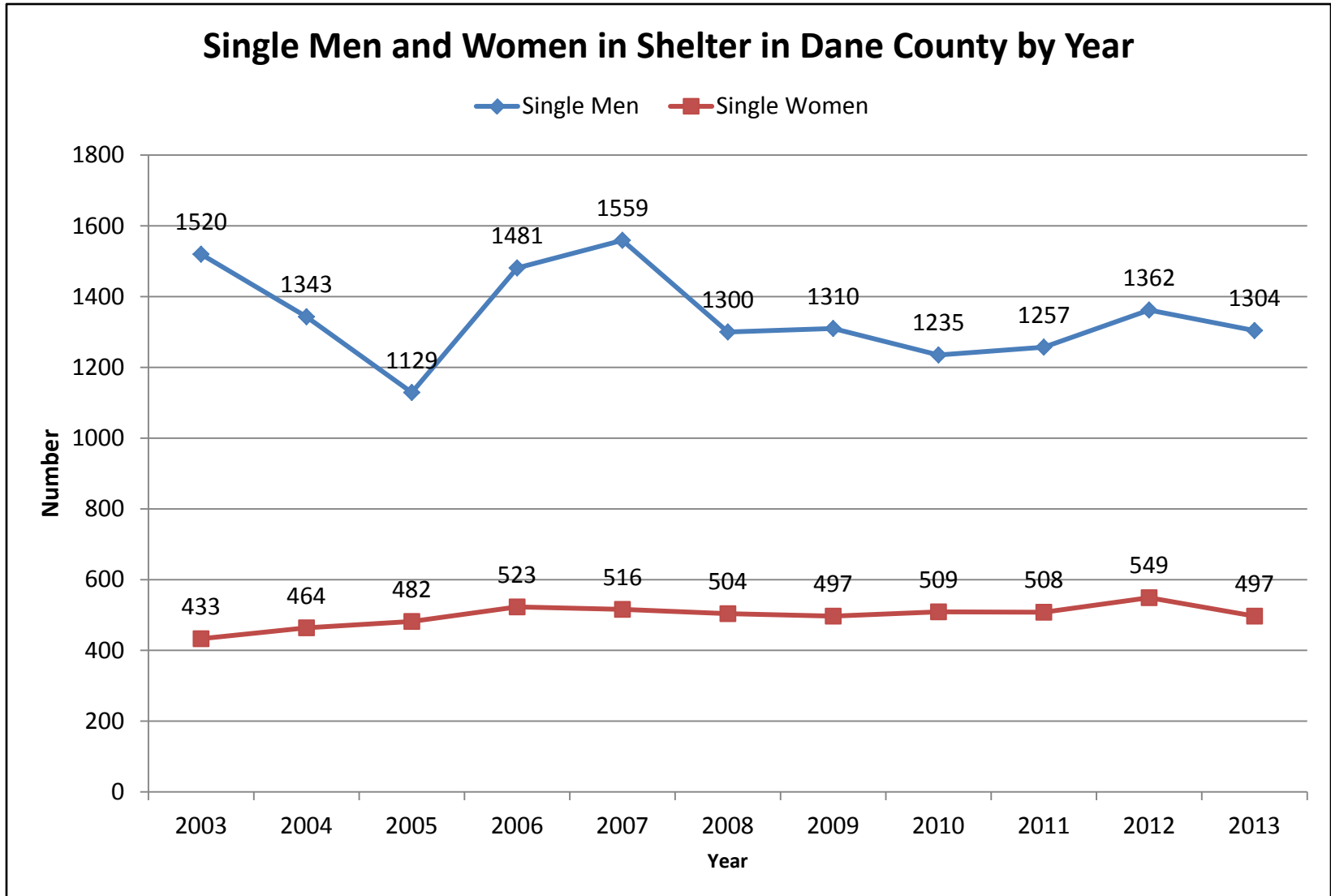


# 2016-2020 Strategic Plan



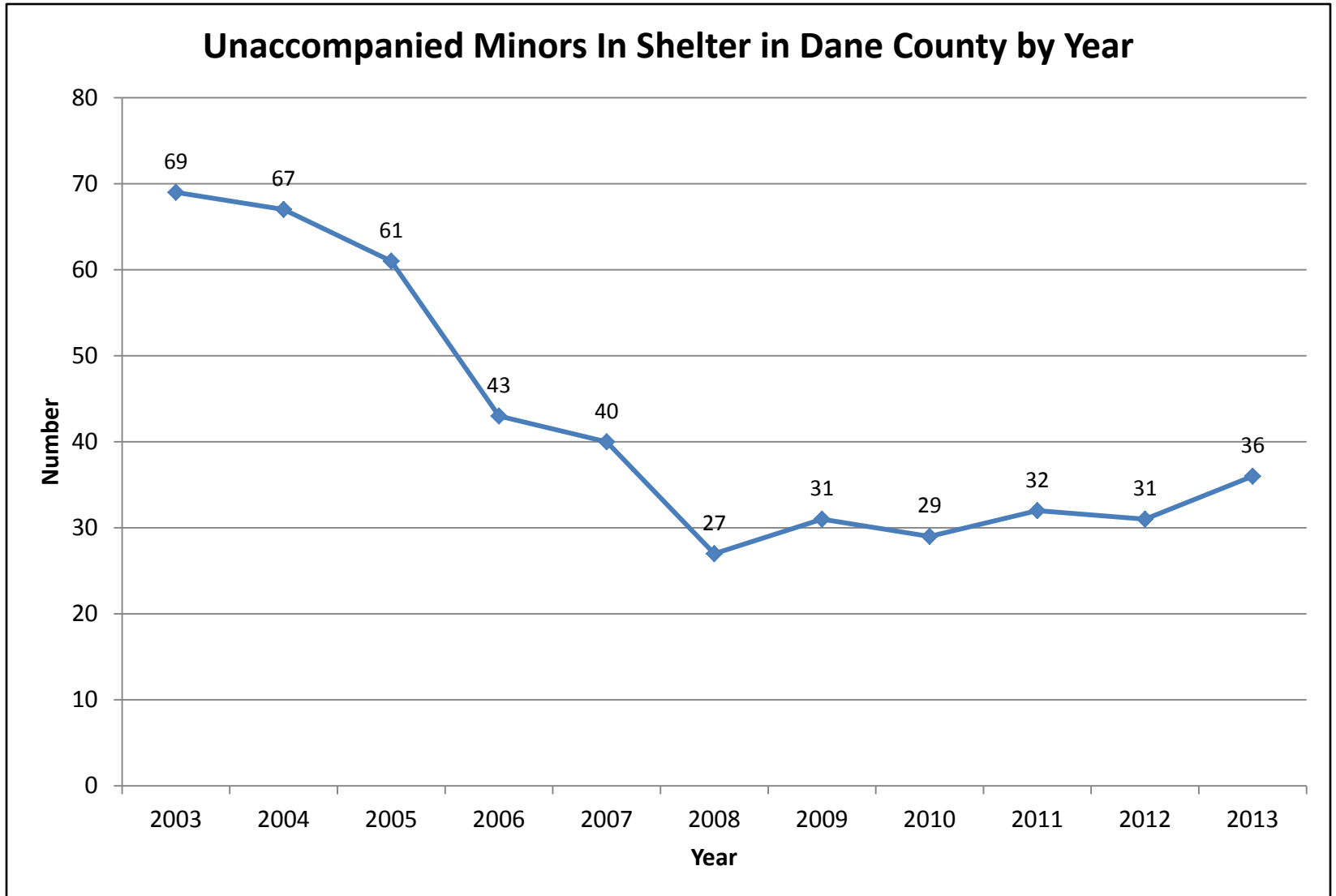


# 2016-2020 Strategic Plan



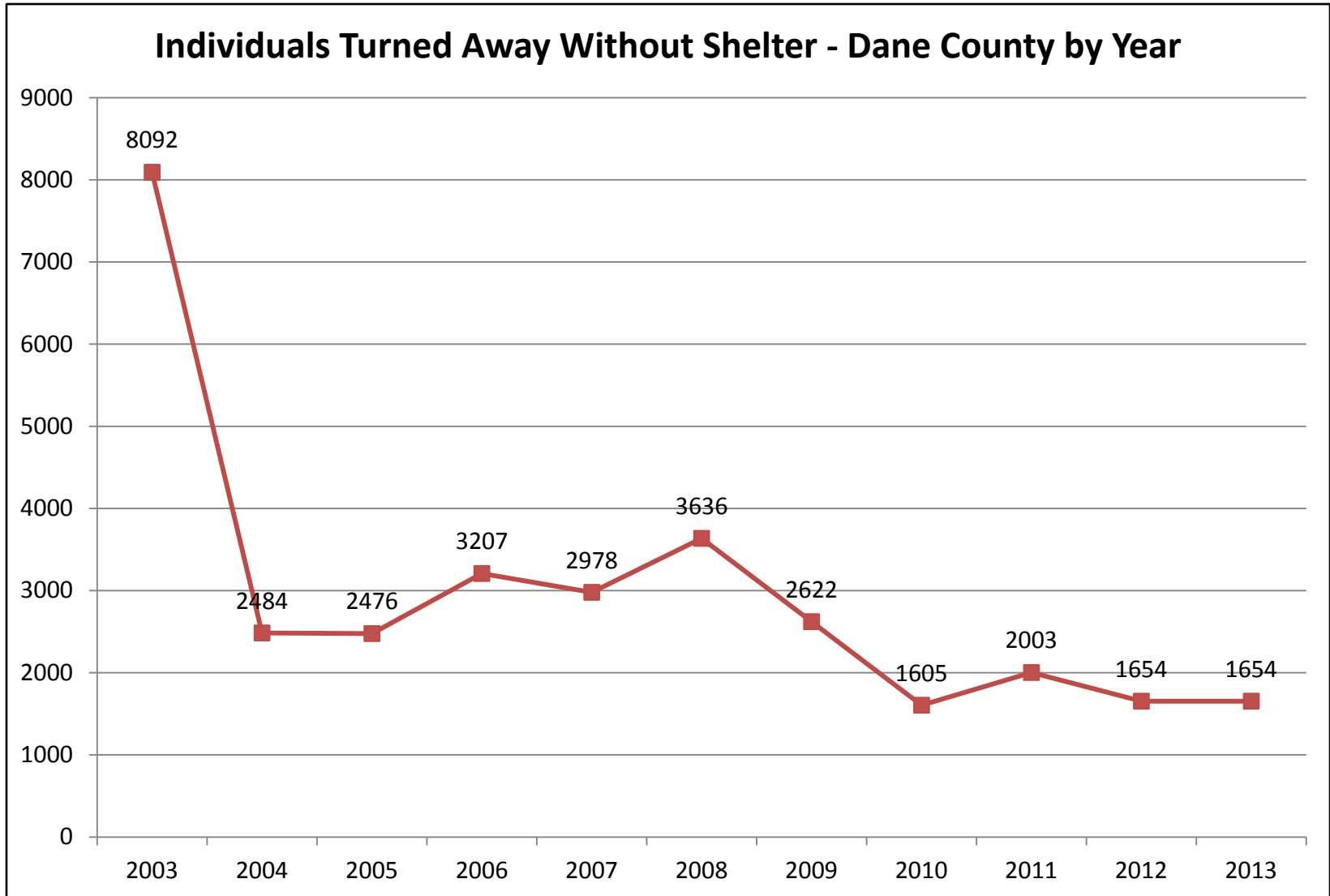


# 2016-2020 Strategic Plan





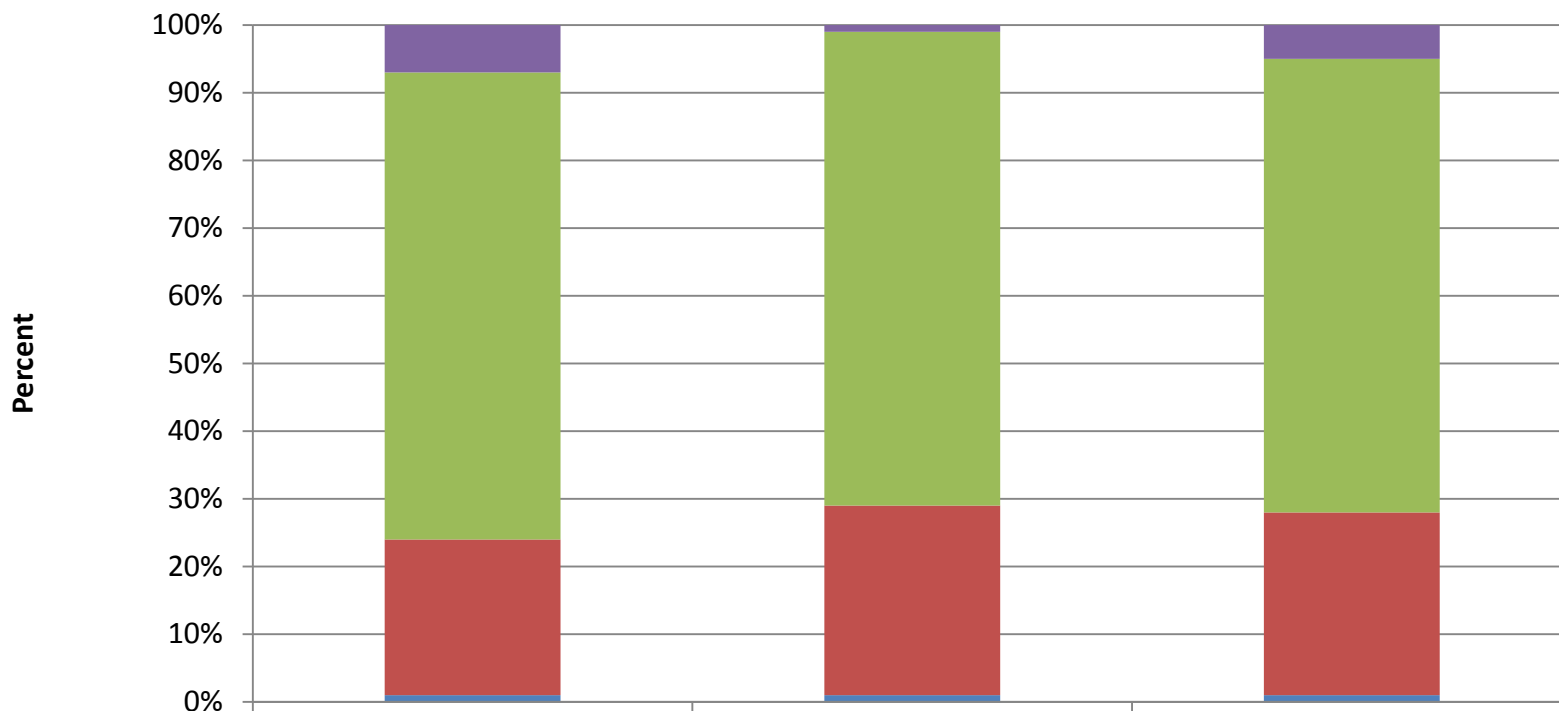
# 2016-2020 Strategic Plan





# 2016-2020 Strategic Plan

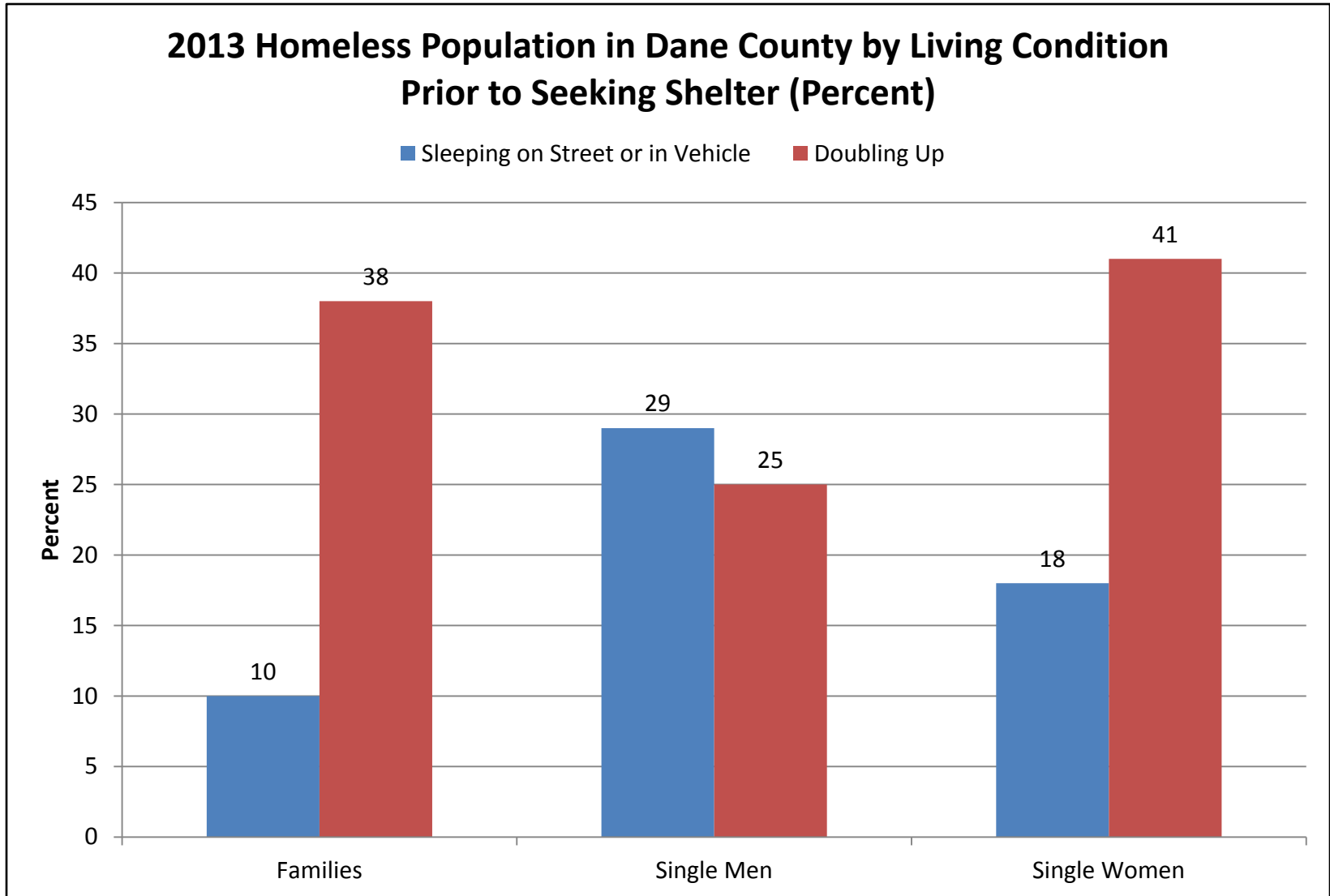
## 2013 Homeless Population by Type by Length of Residency in Dane County (Percent)



Unknown	7	1	5
1 Year or More	69	70	67
< 1 Year	23	28	27
< 1 month	1	1	1

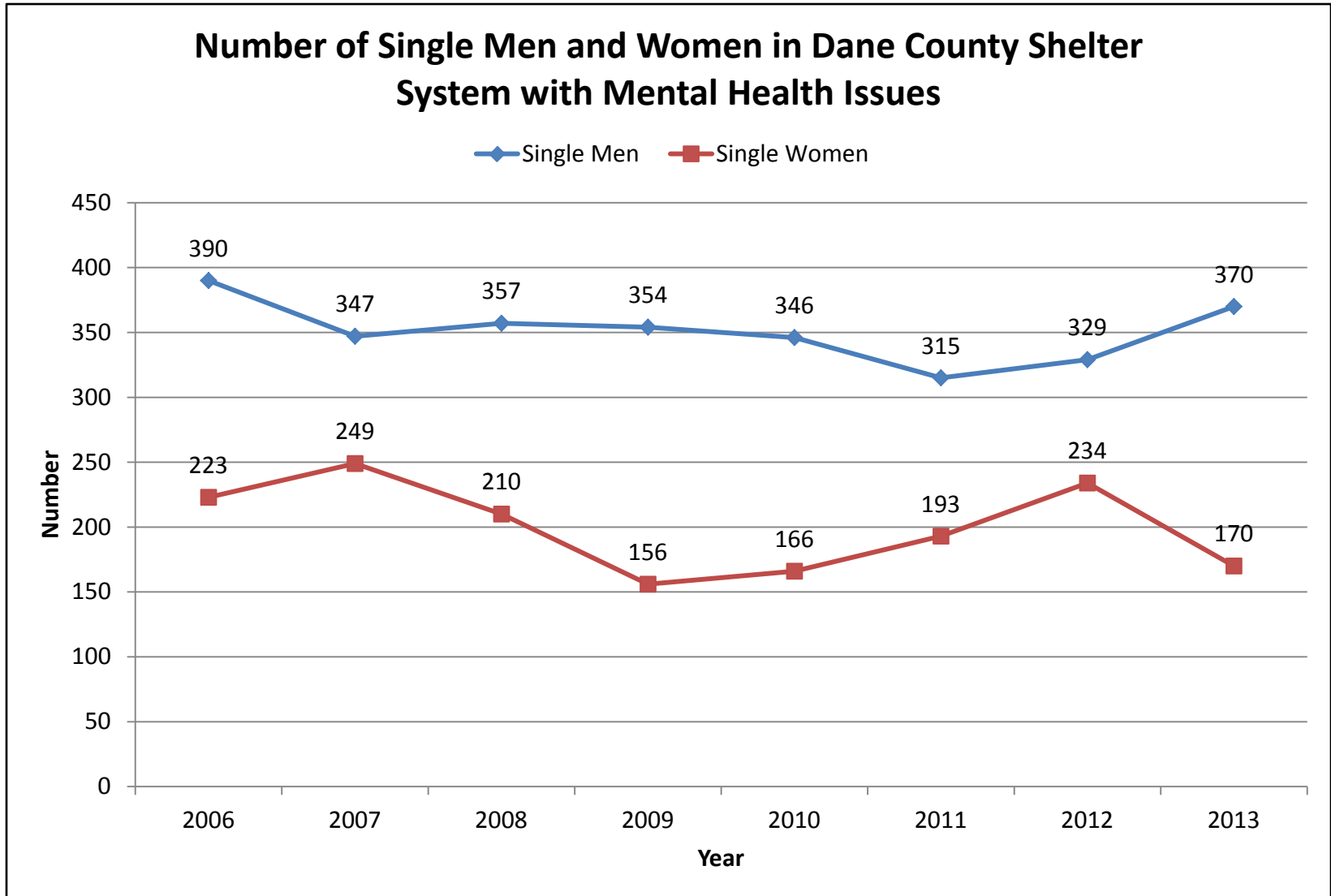


# 2016-2020 Strategic Plan





# 2016-2020 Strategic Plan





# 2016-2020 Strategic Plan

