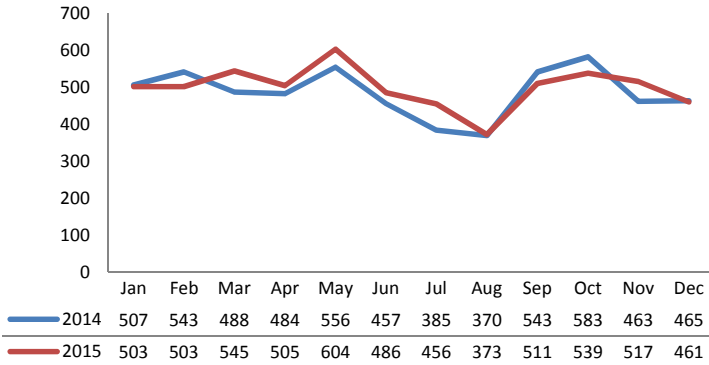




Dane County: Child Protective Services Dashboard - 2015 Jan-Dec

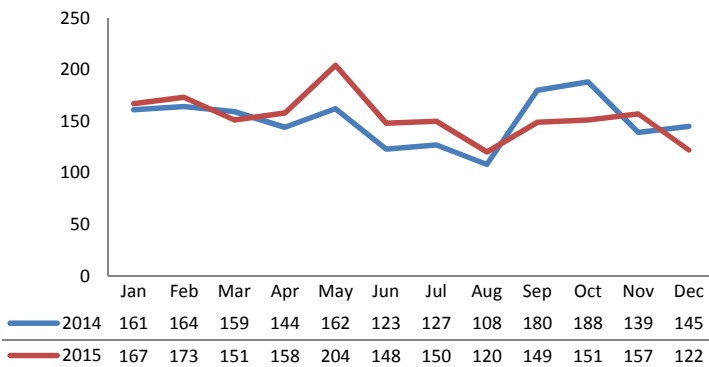


Access Reports

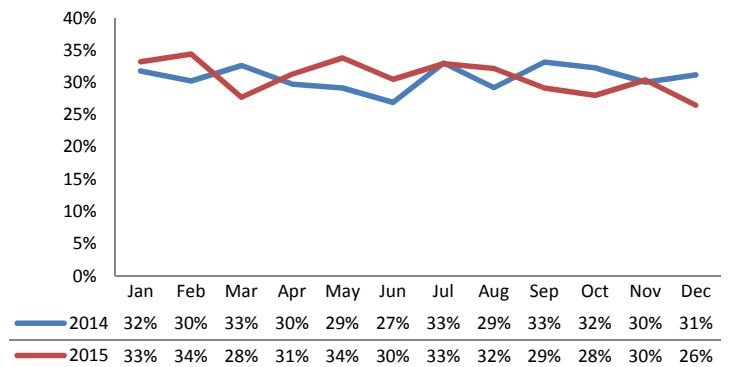


	2014	2015	% Change
Access Reports	5,844	6,003	+2.7%
Screened-In Reports	1,800	1,850	+2.8%
IA's Substantiated	239	217	-9.2%
IA's Completed	1,737	1,801	+3.7%
IA's Completed Timely	937	1,068	+14.0%
IA's Completed Late	800	733	-8.4%
IA F2F Timely	1,444	1,579	+9.3%
IA F2F Not Timely	293	222	-24.2%

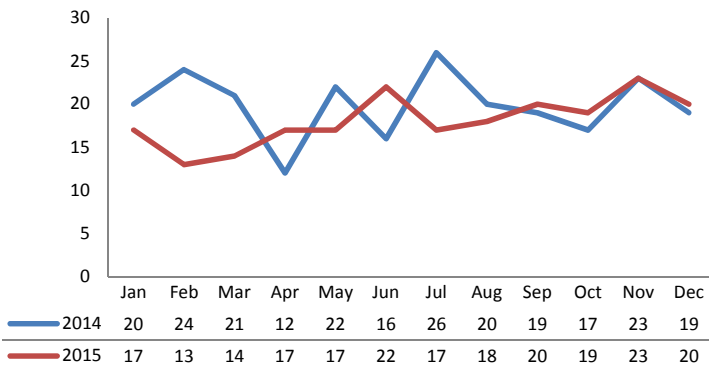
Access Reports Screened-In



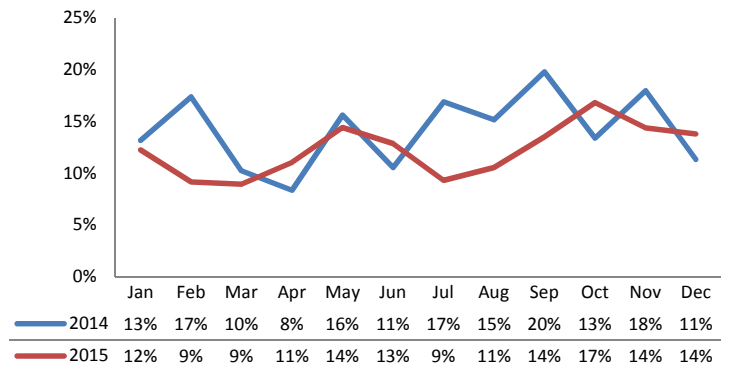
Screen-In Rate



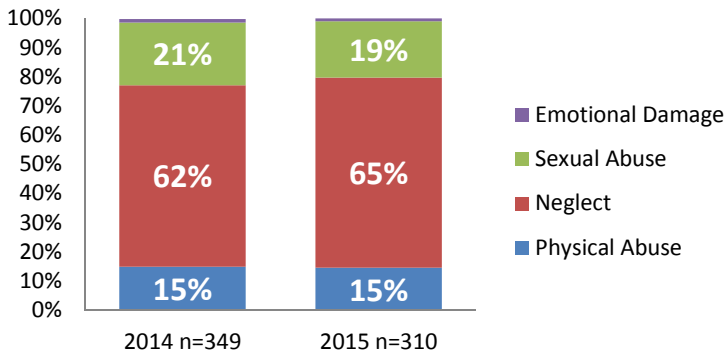
IA's Substantiated



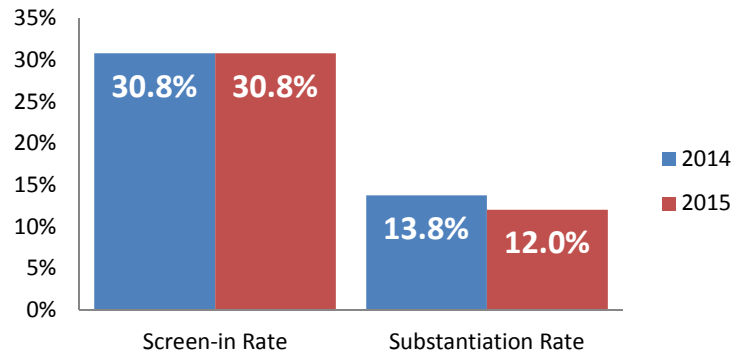
Substantiation Rate



Substantiated Maltreatment Allegations



Screen-In & Substantiation Rates

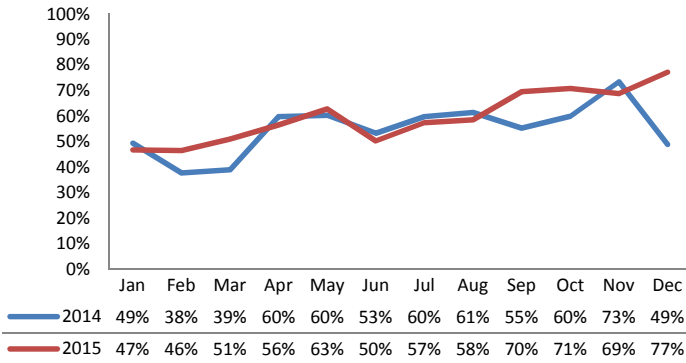




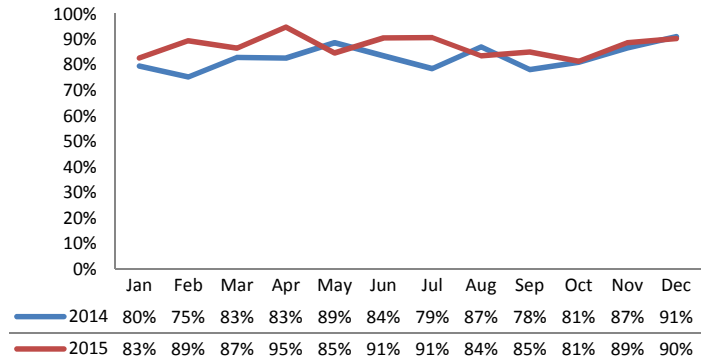
Dane County: Child Protective Services Dashboard - 2015 Jan-Dec



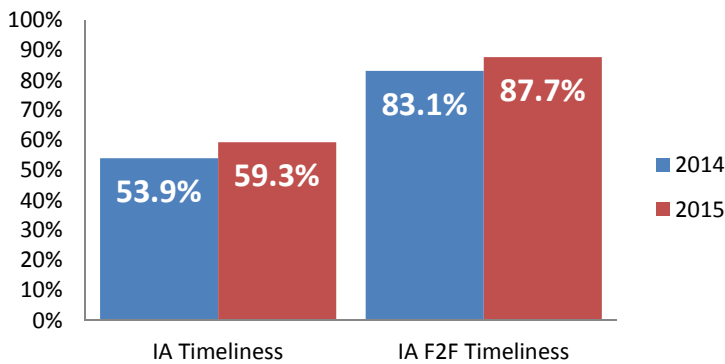
IA Timeliness



IA F2F Timeliness



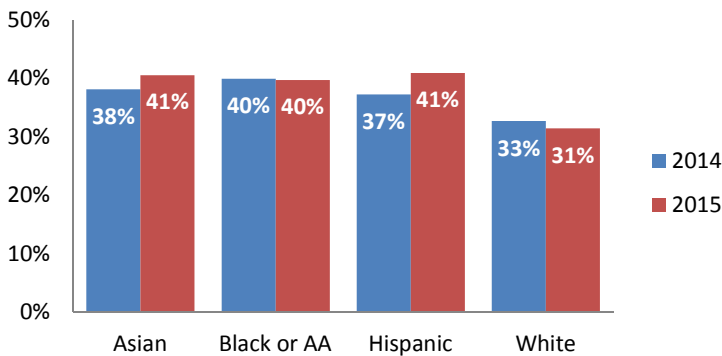
IA & IA F2F Timeliness Rates



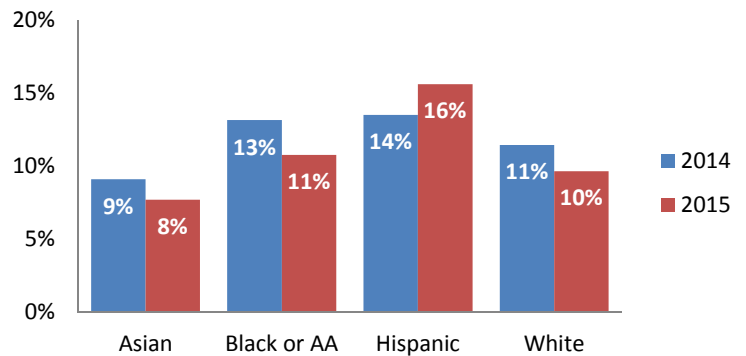
Sum of Unique Youth Screened In per Access Report by Race / Ethnicity

Race / Eth.	2014	2015	% Change
Asian	63	69	+9.5%
Black or AA	1,160	1,176	+1.4%
Hispanic	369	380	+3.0%
Native Am.	36	29	-19.4%
Unknown	6	8	+33.3%
White	1,016	1,036	+2.0%
Total	2,650	2,698	+1.8%

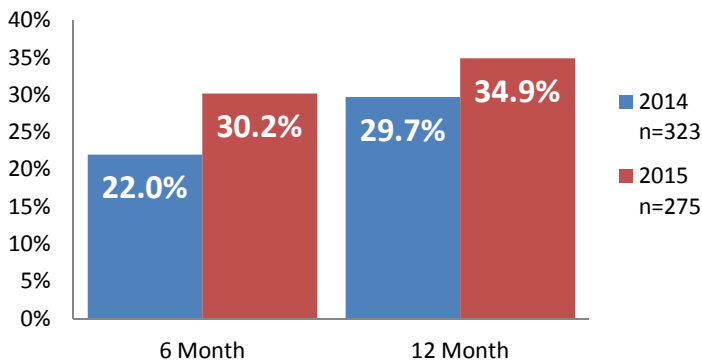
Screen-In Rate by Race/Ethnicity



Substantiation Rate by Race/Ethnicity



Re-Referral Rate



Substantiation Recurrence Rate

