

Detox and the Treatment Readiness Center

Dane County Department of
Human Services

Behavioral Health Division



Introductions

Chloe
Moore

Behavioral Health
Community
Services Manager

Elizabeth
Park-Floyd

Behavioral Health
Program Specialist

Liz Duffie

Behavioral Health
Program
Specialist

Carrie
Simon

Behavioral Health
Community
Services Manager

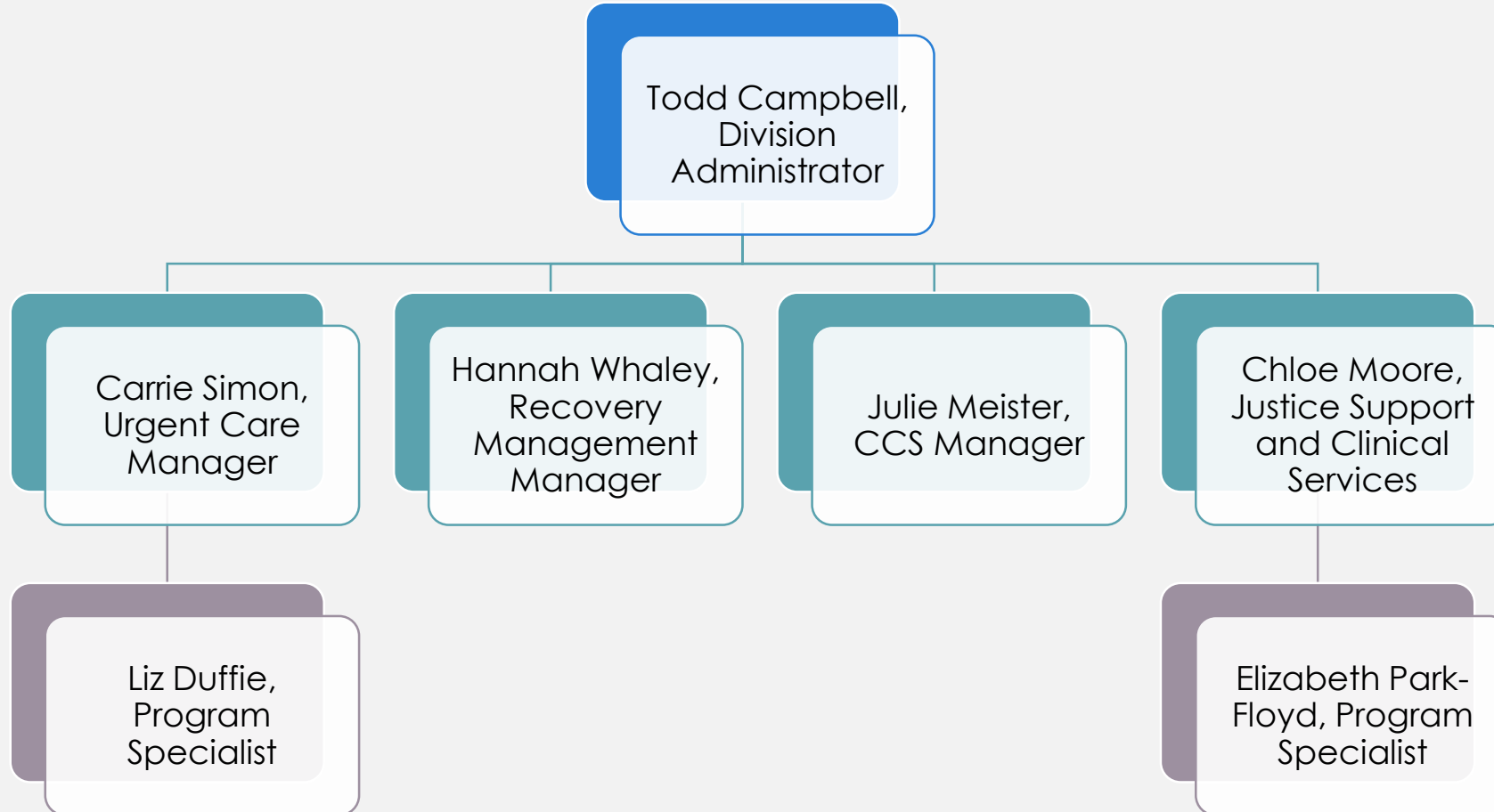
Agenda

-
- Introductions and BH Overview
 - Review of RSUD Resources
 - Overview of Levels of Care
 - Detox and the Treatment Readiness Center
 - Q/A

Housekeeping

- This webinar is being recorded.
- Information being presented has been developed for both professionals and community members. It assumes those in attendance have no understanding of withdrawal management.
- Please feel free to submit questions at any time using the submission box. We have set aside time at the end of the session for Q/A. If we are not able to answer all questions during this session, we will send a follow-up email to attendees.
- We will send all attendees the materials from today's presentation via email.
- Those interested in a certificate of attendance should stay on the Webinar after presentation to provide additional information

Behavioral Health Division



Urgent Care

Crisis Intervention

Crisis Stabilization

Crisis Facilities

Inpatient

Access/Referral

Peer Support

Justice Support and Clinical Services

Alternative Sanctions

Outpatient Services

Substance Use Disorder Treatment

Case Management Services for Youth

Resources for Residential Substance Use Disorder (RSUD) Treatment

- [Q1 Webinar recording is available.](#)
- DCDHS is able to cover Room and Board costs for MA enrolled Dane County residents at any of our contracted agencies.
- Contracted agencies are listed in our RSUD Provider Network [Directory](#).
- DCDHS is only able to fund Room and Board with contracted agencies. Individuals eligible for funding who obtain placement at a non-contracted agency will be responsible for payment of room and board fees.
- DCDHS RSUD Support Email
 - rsudrequests@countyofdane.com
 - Client is discharging from the hospital and needs assistance following up on referrals
 - Seeking RSUD services for someone who is uninsured and ineligible for MA
 - Not accepted to any RSUD provider in the network OR waitlists exceed 30 days
 - Other questions/issues about the RSUD Provider Network
 - Individuals seeking interim Treatment Readiness Center (TRC)

Detox and TRC Webinar



In Scope

- Detox vs. TRC
- Role of DCDHS in accessing TRC and Detox Services
- Requirements / process
- Information about current contracted provider
- General questions about accessing Detox / TRC



Out of Scope

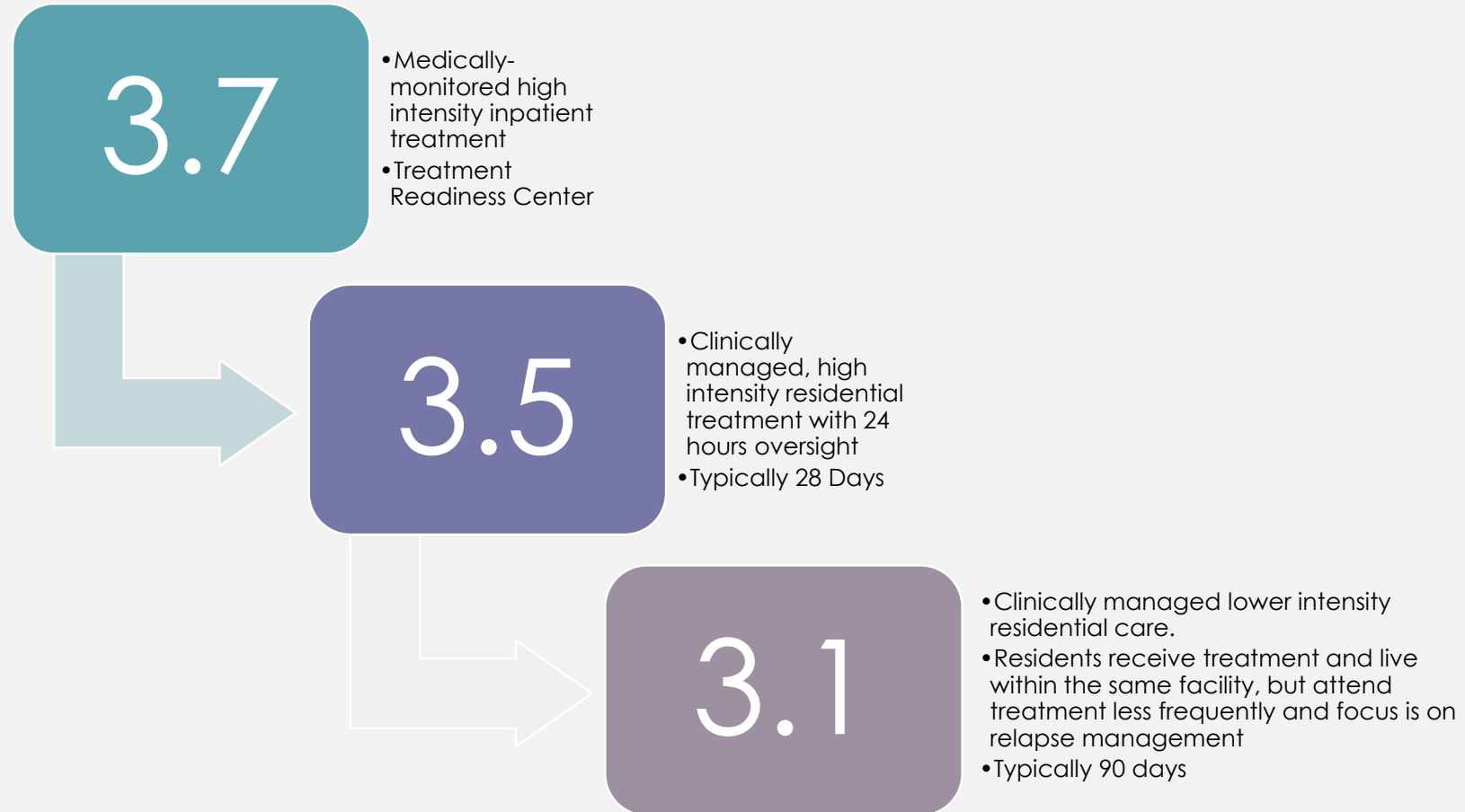
- Details of Protective Custody process
- Information about connecting individuals with non-contracted providers
- Questions related to specific clients

Overview of Levels of Care

American Society of Addiction Medicine Criteria

-
- ASAM assessments are used to determine the appropriate level of care across the SUD treatment spectrum
 - Spectrum ranges from early intervention and outpatient services through inpatient treatment
 - ForwardHealth requires an ASAM assessment performed by licensed clinician for service authorization

ASAM Levels of Care



Defining Detox and TRC

Detox and TRC in a Nutshell

What does “Detox” do?

Provide intoxication monitoring and withdrawal management for individuals under protective custody who are incapacitated by alcohol in Dane County.

What does “TRC” do?

Provide voluntary withdrawal management and a safe, monitored environment to Dane County residents prior to an episode of SUD treatment.



Detox

TRC

Who operates the program?

Tellurian

Tellurian

Who is served by the program?

Individuals found in Dane County incapacitated as described in Wis. Stat. 51.45(11) due to alcohol

Individuals who require withdrawal management and/or a monitored environment in preparation for SUD treatment

Are services voluntary?

No

Yes

Are walk-ins accepted?

No

No

Detox

TRC

What eligibility criteria apply?

Adult (18 years or older)

Withdrawal from barbiturates, benzodiazepines, or methadone is not anticipated

In Dane County

Resident of Dane County

In protective custody due to incapacitation

Voluntarily consents to services

Plan for SUD treatment following the TRC stay*

* This requirement is sometimes waived in consultation with DCDHS staff

Detox

TRC

What does access look like?

An individual must meet criteria for incapacitation to be admitted to Detox

Individuals are referred to Detox by law enforcement who has taken the person into protective custody

If an individual has been accepted into county-funded RSUD treatment and requires withdrawal management prior to admission, this will be coordinated directly between TRC and the RSUD provider

If an individual is preparing for SUD treatment with another type of provider, an inquiry may be sent to the RSUD mailbox

DCDHS Role in Detox/TRC Process

-
- Holds weekly meetings with TRC staff regarding current clients
 - Evaluates and approves cases where a TRC stay may be indicated outside of the usual pathway of withdrawal management in preparation for RSUD treatment (e.g. ASAM of 3.7, high potential for overdose following a period of forced sobriety, single case agreement, etc)
 - Contact RSUD mailbox (rsudrequests@countyofdane.com) to explore this option

Dane County Care Center

-
- Dane County Care Center (DCCC) provides mental health stabilization services
 - If an RSUD provider determines that mental health stabilization is needed prior to admission, they will coordinate with DCDHS staff to explore admission to DCCC
 - A TRC stay may occur prior to or following a DCCC stay to facilitate withdrawal management and/or stability until the scheduled RSUD bed date – DCCC and TRC coordinate this directly

Need Assistance?

BHRC

- Website: Danebhrc.org
- Email: bhrc@countyofdane.com
- Phone: 608-267-2244
- Assistance in connecting to providers
- Case management referrals
- Questions about Recovery Management Services
- Consultation about RSUD treatment options
- Connection to Peer Support Services

DCDHS RSUD Support Email

- rsudrequests@countyofdane.com
- General questions or requests for support

Info to Include when E-mailing RSUD Mailbox

Medical/Physical accommodations needed

Medication list

Substances used

Contact information for current providers

Phone number for follow up

Post-discharge plan

Detox and TRC Program Details

Tellurian

The Facility – “medical” vs. “social” at Detox/TRC

Detox and TRC programming are both delivered in the same building.

The building is divided into the “medical” side and the “social” side.

All patients are admitted on the medical side, where there is more intensive staff monitoring.

Detox clients stay on the medical side for the duration of their stay.

TRC clients stay on the medical side while undergoing active withdrawal; clients not in withdrawal are served on the social side.

The social side has a television, reading materials, games, etc.

Services Provided

Clients receive assessment from an RN to determine medical needs and evaluate for the presence of withdrawal.

Based on withdrawal assessments (CIWA-AR, COWS, AWAS, and/or CIWA-B), an RN may dispense medications for withdrawal management.

All clients have an intake meeting with a credentialed substance use clinician. Clients are offered an ASAM and information about treatment options if they are interested and do not already have a plan of treatment.

This meeting will occur upon arrival when possible (for TRC clients), and typically occurs at the end of the stay for Detox clients (who are incapacitated at admission).

AA meetings are held nightly at 8pm. NA meetings are held on Tuesdays and Thursdays at 6pm.

Other Things to Know

Cell phones and similar devices are not allowed on the unit and are kept in the staff office.

TV times (on the social side) are from 8am to 10pm. The TV is off during AA and NA meetings.

Any client property brought to the facility is searched and inventoried.

Detox (involuntary) clients may not leave the building during their stay. Most TRC clients are permitted to smoke during group smoke breaks. No smoking or vaping is allowed in the building.

Visiting hours are 3pm-5pm and 6pm-8pm daily, except Tuesdays and Thursdays when evening visiting hours are 7pm-8pm due to NA meetings. Visitors must be 18 years of age or older.

Members of a client's care team may visit at other times if coordinated with staff.

Limitations

Clients who require supplemental oxygen or an IV cannot be served at Detox/TRC.

Some individuals have been identified as ineligible for Detox / TRC services on the basis of medical complexity or incidents of violence, significant threats, or property damage. Such circumstances are reviewed at least annually.

Clients expressing suicidal ideation are placed in one of three seclusion rooms on the medical side to be within sight of staff. They receive a suicide screener to determine whether further assessment is warranted – in such cases Crisis is contacted.

Both Detox and TRC offer a monitored environment where clients' medical needs can be met. Staff are available to help clients stay safe and comfortable, and to support them in moving forward with recovery. However, these programs are much less structured than an RSUD program and are not a substitute for treatment.

Contacts

Casey
Pichette

Tellurian - Director of Treatment Services

- cpichette@tellurian.org
- 608-222-7311 ext. 124

Calvin Zick

Tellurian - Detox Nursing Supervisor

- czick@tellurian.org

Molly
Kannegiesser

Tellurian - Detox Program Supervisor

- mkannegiesser@tellurian.org

Chloe Moore

DCDHS - JSCS Manager

- Moore.Chloe@countyofdane.com
- 608-698-6384

Carrie Simon

DCDHS - Urgent Care Manager

- Simon@countyofdane.com
- 608-471-0882

Elizabeth Park-
Floyd

DCDHS - BH Program Specialist

- Park-floyd.Elizabeth@countyofdane.com
- 608-949-2115

Liz Duffie

DCDHS - BH Program Specialist

- Duffie.Elizabeth@countyofdane.com
- 608-516-6013

Q/A

Save the Dates:

The landscape of RSUD Treatment is constantly evolving. Stay up to date by attending all quarterly virtual info sessions. Invites and information to follow.

July 14 • October 13

All sessions are Fridays, 9–11am

